

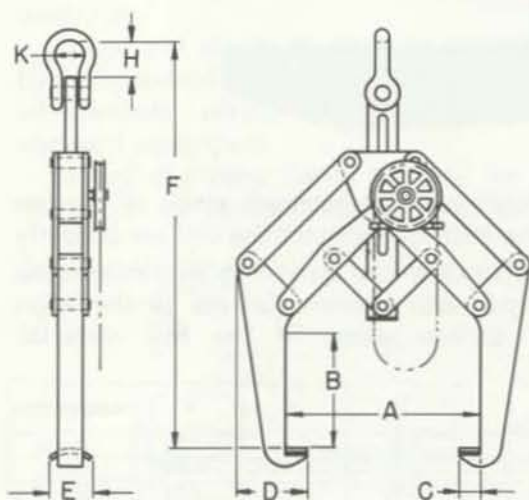
DOWNNS CRANE & HOIST CO., INC.

GRABMASTER® COIL HANDLING EQUIPMENT

BULLETIN
NO. 204

DESIGNERS & MANUFACTURERS OF MATERIAL HANDLING EQUIPMENT SINCE 1922

COIL TONGS — PARALLEL ARM SERIES 72



DOWNNS Coil Tong are for handling any coiled material having an open core, such as steel or aluminum.

DOWNNS Coil Tong save valuable floor space in storage and handling areas. This tong requires only a narrow aisle for removal of the tong from the coil, thus enabling the coils to be stacked close together.

The tongs are balanced for rapid easy adjustment. Only a light pull on the hand chain is required to open or close the tong. When under load the tong exerts a positive closing force which provides a grabbing action on the coil.

The lifting pads are curved and all parts that may contact the load are smoothly finished to minimize chance of damage to the coiled material.

CAPACITY IN TONS	ITEM NO.	COIL WIDTH A		B	C	D	E	F	H	K	WEIGHT LBS.
		MAX.	MIN.								
5	72-100-30	30	10	20	5	12 ⁵ / ₈	6	61	2 ³ / ₄	2 ⁵ / ₈	722
	72-100-48	48	16	20	5	12 ⁵ / ₈	6	71	2 ³ / ₄	2 ⁵ / ₈	832
	72-100-60	60	18	22	5	13	6	81	3 ¹ / ₄	2 ⁷ / ₈	990
10	72-200-60	60	18	22	5	13	6	83	4	3 ⁵ / ₈	1114
	72-200-72	72	24	22	5	13	6	90	4	3 ⁵ / ₈	1356
15	72-300-60	60	18	27	5	16 ³ / ₄	6	95	4	3 ⁷ / ₈	1728
	72-300-72	72	24	27	5	16 ³ / ₄	6	102	4	3 ⁷ / ₈	2078
20	72-400-60	60	18	27	5	16 ³ / ₄	6	96	5 ¹ / ₄	5	1938
	72-400-72	72	24	27	5	16 ³ / ₄	6	104	5 ¹ / ₄	5	2100

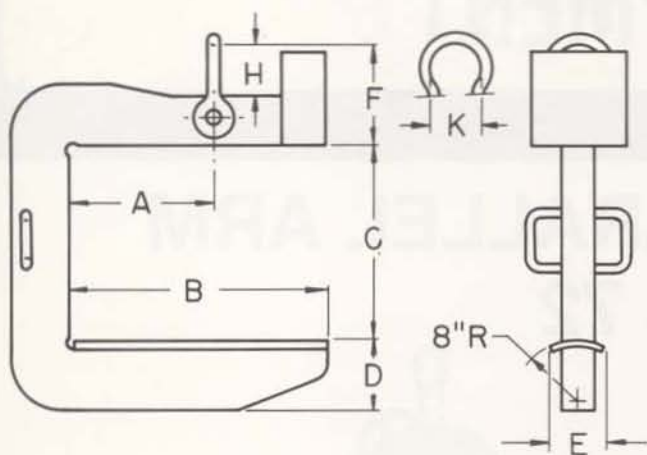
DOWNNS CRANE & HOIST CO., INC.

8827 S. JUNIPER ST., LOS ANGELES, CALIF. 90002

PHONE: (323) 589-6061

WWW.DOWNNSCRANE.COM

COIL HOOKS—COUNTERWEIGHTED SERIES 71



DOWN'S Coil Hooks are for the lifting, transporting, and handling of steel and aluminum coiled material.

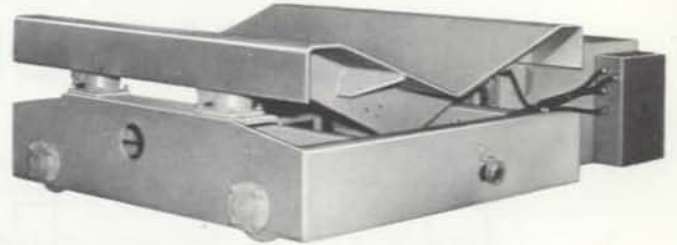
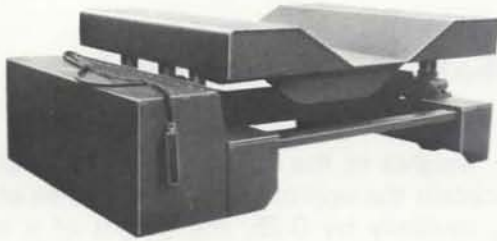
Hooks are counterweighted to balance and hang level at all times for easy insertion and removal from the coil.

Constructed of high strength steel, all corners and surfaces that will contact the coil are properly radiused, smoothed and curved to eliminate stress concentrations and prevent damage to the edges and inner surface wraps of the coil material.

CAPACITY IN TONS	ITEM NO.	COIL WIDTHS *		A	B	C	D	E	F	H	K	WEIGHT LBS.
		MAX.	MIN.									
1/2	71-30-18	18	12	10	16	20	5	3	5 3/4	1 3/4	1 5/8	150
	71-30-24	24	18	13	22	20	5 1/2	3	6 1/4	1 3/4	1 5/8	180
	71-30-30	30	24	16	28	20	6	3	6 3/4	1 3/4	1 5/8	215
	71-30-36	36	30	19	34	20	6 1/4	3	7	1 3/4	1 5/8	248
	71-30-48	48	36	25	43	20	7	3	7 3/4	1 3/4	1 5/8	319
3	71-60-60	60	48	31	55	20	7 1/2	3	8 1/4	1 3/4	1 5/8	394
	71-60-18	18	12	10	16	20	5 3/4	4	7 7/8	3 1/8	2 5/8	288
	71-60-24	24	18	13	22	20	6 1/4	4	8 3/4	3 1/8	2 5/8	335
	71-60-30	30	24	16	28	20	6 3/4	4	8 7/8	3 1/8	2 5/8	389
	71-60-36	36	30	19	34	20	7	4	9 1/8	3 1/8	2 5/8	441
5	71-100-48	48	36	25	43	20	8	4	10 1/8	3 1/8	2 5/8	541
	71-100-60	60	48	31	55	20	8 3/4	4	10 7/8	3 1/8	2 5/8	720
	71-100-24	24	18	13	22	24	7 1/2	4	9 1/2	3	2 3/4	459
	71-100-36	36	24	19	31	24	9	4	11	3	2 3/4	503
	71-100-48	48	36	25	43	24	9 1/8	4	12 1/2	4 1/2	3 5/8	975
7 1/2	71-150-60	60	48	31	55	24	9 3/8	4	12 3/4	4 1/2	3 5/8	1099
	71-150-72	72	60	37	67	24	9 3/8	4	14 1/4	6	5	1510
	71-150-36	36	24	19	31	27	9 1/8	4	12 1/2	4	3 5/8	947
10	71-200-48	48	36	25	43	27	10 3/8	4	13 3/4	4	3 5/8	1228
	71-200-60	60	48	31	55	27	10 1/8	4	15 1/4	5 3/4	5	1665
	71-200-72	72	60	37	67	27	10 7/8	4	16	5 3/4	5	1995
15	71-300-48	48	36	25	43	27	11 3/4	4	16 3/4	5 3/4	5 3/4	1247
	71-300-60	60	48	31	55	30	12 3/4	4 1/2	15 3/4	5 3/4	5 3/4	1606
	71-300-72	72	60	37	67	30	13 3/4	4 1/2	16 1/4	5 1/4	5	1953
	71-300-24	24	18	13	22	24	7 1/2	4	9 1/2	3	2 3/4	459
20	71-400-48	48	36	25	43	30	12	5 1/2	19 3/4	8 1/2	7 1/4	2282
	71-400-60	60	48	31	55	30	13	5 1/2	20 3/4	8 1/2	7 1/4	2704
	71-400-72	72	60	37	67	30	13 3/4	5 1/2	21 1/2	8 1/2	7 1/4	3191
25	71-500-48	48	36	25	43	30	13 1/4	5 1/2	20 1/2	8	7 1/4	3217
	71-500-60	60	48	31	55	30	14 1/4	5 1/2	21 1/2	8	7 1/4	3928
	71-500-72	72	60	37	67	30	15 1/4	5 1/2	22 1/2	8	7 1/4	4355

*The minimum coil width as specified is the shortest width that may be handled without the lower arm of the hook protruding out thru the coil. Narrower width coils may be handled if protrusion of the hook thru the coil is not a problem.

COIL CARS — ELEVATING SERIES 73 & 74



DOWN'S Coil Cars are for moving and elevating steel and aluminum into position for placing on or removing from the mandrels of processing machines.

Travel and elevating motions are each operated by independent motors. Furnished complete with all controls, wiring and push-button station as standard equipment.

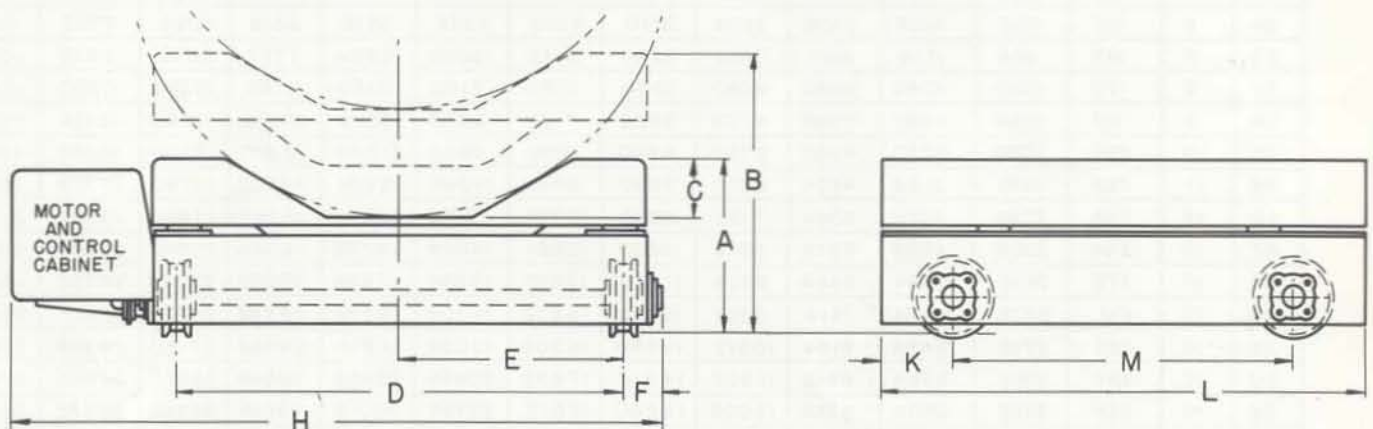
Closed end cars, Series 73, are for use where there are no obstructions on the floor beneath

the mandrel.

Open end cars, Series 74, have one end of the car frame open to pass over floor obstructions such as the base frame of the processing mandrel.

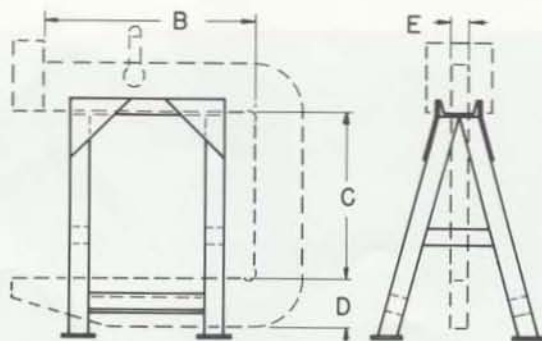
Wheels are roller bearing, double flange and will operate on rails up to 35 # A.S.C.E. with a 1-3/4" head width.

When making inquiries: give available electric current characteristics.



CAPACITY IN TONS	ITEM NO.	A	B	C	D	E	F	H	K	L	M	WEIGHT LBS.
5	73-100	19 1/2	31 1/2	5 1/2	50	25	4 1/4	71 3/4	8	54	38	1970
10	73-200	21 5/8	33 5/8	7 3/8	50	25	4 1/4	71 3/4	8	54	38	2200
10	74-200	21 3/8	33 3/8	6 3/8	60	30	6	85	8	54	38	2980

COIL HOOK STORAGE RACK



A time and space saving stand for storing coil hooks when not in use.

This rack will hold the hook up off the floor and in position for instant replacement on the crane hook when its use is required. Racks are available designed for either single or multiple hook storage.

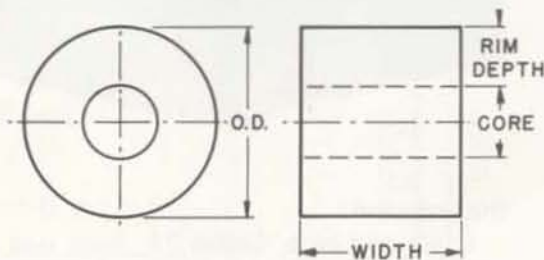
When requesting information on storage racks, give the principle hook dimensions B-C-D-E (from the drawing) and also the hook weight.

DOWN'S CRANE & HOIST CO., INC.

8827 S. JUNIPER ST., LOS ANGELES, CALIF. 90002

PHONE (323) 589-6061

WEIGHT OF STEEL COILS



The weights in the table are for *steel* coils only. To obtain the approximate weight of an *aluminum* coil, multiply by 0.35, the weight of a steel coil of similar dimensions.

All weights are approximate and will vary according to tightness of the wrap, size of core, etc.

STEEL COIL DIMENSIONS & WEIGHTS WITH 16" DIA. CORES

COIL O. D.	RIM DEPTH	NET WEIGHTS LBS AT WIDTHS — STEEL WGT .2816 PER CU. INCH													
		1" WIDTH	6"	12"	18"	24"	30"	36"	42"	48"	54"	60"	66"	72"	
24	4	71	426	852	1278	1704	2130	2556	2982	3408	3834	4260	4686	5112	
26	5	93	558	1116	1674	2232	2790	3348	3906	4464	5022	5580	6138	6696	
28	6	117	702	1404	2106	2808	3510	4212	4914	5616	6318	7020	7722	8424	
30	7	143	858	1716	2574	3432	4290	5148	6006	6864	7722	8580	9438	10296	
32	8	170	1020	2040	3060	4080	5100	6120	7140	8160	9180	10200	11220	12240	
34	9	199	1194	2388	3582	4776	5970	7164	8358	9552	10746	11940	13134	14328	
36	10	230	1380	2760	4140	5520	6900	8280	9660	11040	12420	13800	15180	16560	
38	11	263	1578	3156	4734	6312	7890	9468	11046	12624	14202	15780	17358	18936	
40	12	298	1788	3576	5364	7152	8940	10728	12516	14304	16092	17880	19668	21456	
42	13	334	2004	4008	6012	8016	10020	12024	14028	16032	18036	20040	22044	24048	
44	14	372	2232	4464	6696	8928	11160	13392	15624	17856	20088	22320	24552	26784	
46	15	412	2472	4944	7416	9888	12360	14832	17304	19776	22248	24720	27192	29664	
48	16	453	2718	5436	8154	10872	13590	16308	19026	21744	24462	27180	29898	32616	
50	17	497	2982	5964	8946	11928	14910	17892	20874	23856	26838	29820	32802	35784	
52	18	542	3252	6504	9756	13008	16260	19512	22764	26016	29268	32520	35772	39024	
54	19	588	3528	7056	10584	14112	17640	21168	24696	28224	31752	35280	38808	42336	
56	20	637	3822	7644	11466	15288	19110	22932	26754	30576	34398	38220	42042	45864	
58	21	688	4128	8256	12384	16512	20640	24768	28896	33024	37152	41280	45408	49536	
60	22	740	4440	8880	13320	17760	22200	26640	31080	35520	39960	44400	48840	53280	
62	23	794	4764	9528	14292	19056	23820	28584	33348	38112	42876	47640	52404	57168	
64	24	850	5100	10200	15300	20400	25500	30600	35700	40800	45900	51000	56100	61200	
66	25	907	5442	10884	16326	21768	27210	32652	38094	43536	48978	54420	59862	65304	
68	26	966	5796	11592	17388	23184	28980	34776	40572	46368	52164	57960	63756	69552	
70	27	1028	6168	12336	18504	24672	30840	37008	43176	49344	55512	61680	67848	74016	
72	28	1090	6540	13080	19620	26160	32700	39240	45780	52320	58860	65400	71940	78480	

It is assumed that all devices in this bulletin will be operated only by persons competently trained in their use and maintenance. *All handling equipment shown is to be used only under normal operating conditions and by safety minded personnel. Any use of the equipment for other than its intended purpose is done at users own risk.*

We reserve the right to change designs at any time when in our opinion the product may be improved thereby.

Dimensions in inches unless otherwise specified. Weights given are approximate and may vary.

Capacities given have been carefully calculated and proven in use; they are submitted without assuming any responsibility beyond the original price of the merchandise.