

DOWN'S SHEET LIFTERS

SERIES 551—LOW HEADROOM

Low headroom sheet lifters for one man operation. They will save hours of time and money over any other method of handling loose or bundled sheet steel. The low headroom feature will allow stacking material high and close to the ceiling. The small space or side clearance required will permit setting the stacks close together thus storing more material in a smaller area.

The straight line horizontal opening and closing of the grab is fast and easy. The manual rotation of the hand wheel will provide infinite adjustment for sheets of any width between the maximum and minimum width capacity of the grab. This horizontal movement is accomplished thru a system of precision cut tooth racks, spur gears and efficient multiple thread worm gearing. The various units are easily disassembled for inspection and repair.

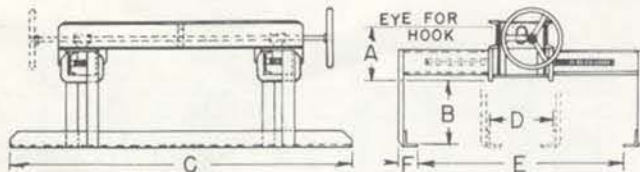
Listed below are the most popular sizes for handling steel sheet. We are, however, prepared to furnish this style grab in any size and capacity for handling any material for which they are suitable.

For speed and convenience in operation, wood strips or separators should be placed between each

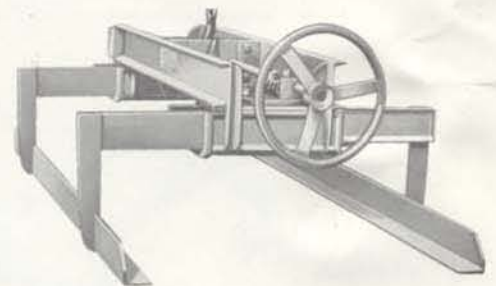
lift of sheets. These generally consist of 3/4" or thicker material placed lengthwise of the sheets and five or six inches from each edge. This will provide an opening for quick easy entry and removal of the carrying angles of the grab.

These lifters may be equipped with the following optional equipment which is available at additional cost.

- Hand wheels at both ends of grab.
- Hand wheels extended to clear the ends of long sheets.
- Pendant chains in place of hand wheels for operation beyond an operator's reach.
- Electric motor for opening and closing the grab.
- Electric motor operated turntable for rotating the load into position.
- A certified scale for weighing the load as it is lifted. This scale may be fitted with a printing recorder if desired.
- Carrying angles may be shortened or lengthened to suit.
- Carrying angles may be notched out to clear cross dunnage, conveyor rolls, etc.
- Legs may be made shorter or longer to suit various pile heights and headroom conditions.
- Removable end hooks may be fitted.
- Permanent end hooks, hand or motor operated, may be built into the lifter.



| ITEM NUMBER | CAP. TONS | FOR SHEET WIDTHS | DIM. A | DIM. B | DIM. C | DIM. D | DIM. E | DIM. F | WEIGHT LBS. |
|-------------|-----------|------------------|--------|--------|--------|--------|--------|--------|-------------|
| 551-40-36 | 2 | 12" TO 36" | 9 3/4 | 9" | 84" | 12" | 38" | 4 1/2 | 575 |
| 551-40-48 | | 16 " 48 | 9 7/8 | | | 16 | 50 | | 600 |
| 551-40-54 | | 18 " 54 | 9 7/8 | | | 18 | 56 | | 615 |
| 551-40-60 | | 20 " 60 | 9 7/8 | | | 20 | 62 | | 635 |
| 551-60-36 | 3 | 12" TO 36" | 9 3/4 | 10" | 84" | 12" | 38" | 4 1/2 | 580 |
| 551-60-48 | | 16 " 48 | 9 7/8 | | | 16 | 50 | | 620 |
| 551-60-54 | | 18 " 54 | 10 7/8 | | | 18 | 56 | | 630 |
| 551-60-60 | | 20 " 60 | 10 7/8 | | | 20 | 62 | | 645 |
| 551-80-36 | 4 | 12 TO 36 | 11 3/4 | 15" | 84" | 12" | 38" | 4 5/8 | 640 |
| 551-80-48 | | 16 " 48 | 12 1/4 | | | 16 | 50 | | 670 |
| 551-80-54 | | 18 " 54 | 12 1/4 | | | 18 | 56 | | 680 |
| 551-80-60 | | 20 " 60 | 12 1/4 | | | 20 | 62 | | 710 |
| 551-100-48 | 5 | 16 TO 48 | 13 | 16" | 84" | 16 | 50 | 4 3/4 | 810 |
| 551-100-54 | | 18 " 54 | 13 | | | 18 | 56 | | 835 |
| 551-100-60 | | 20 " 60 | 13 | | | 20 | 62 | | 870 |
| 551-100-72 | | 24 " 72 | 13 | | | 24 | 74 | | 910 |
| 551-150-54 | 7 1/2 | 18 TO 54 | 16 | 18" | 84" | 18 | 56 | 5 1/4 | 1165 |
| 551-150-72 | | 24 " 72 | 16 | | | 24 | 74 | | 1260 |
| 551-200-54 | 10 | 18 TO 54 | 17 1/4 | 20" | 84" | 18 | 56 | 5 1/2 | 1280 |
| 551-200-72 | | 24 " 72 | 17 1/4 | | | 24 | 74 | | 1390 |



The leg length, "Dimension B" will govern the depth of the stack of sheets which may be picked at each lift and will also govern the overall height of the lifter. Where headroom is a problem, "Dimension B" may be decreased at no additional cost. The desired leg length must then be specified, otherwise they will be shipped as listed.

DOWN'S CRANE & HOIST CO. INC.

8827 JUNIPER ST. • LOS ANGELES • CALIFORNIA 90002 • (323) 589-6061

DESIGNERS & MANUFACTURERS OF MATERIAL HANDLING EQUIPMENT SINCE 1922

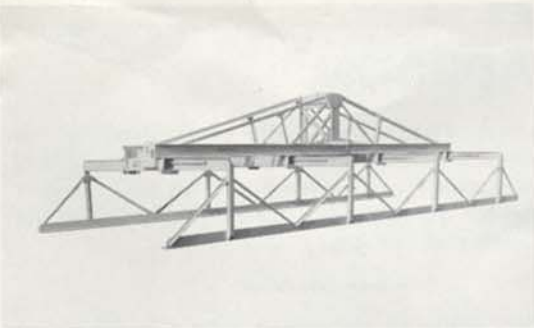
WWW.DOWNSCRANE.COM

DOWN'S CRANE & HOIST CO. INC.

8827 JUNIPER ST. • LOS ANGELES • CALIFORNIA 90002 • (323) 589-6061

DESIGNERS & MANUFACTURERS OF MATERIAL HANDLING EQUIPMENT SINCE 1922

SPECIALLY DESIGNED MODELS



Downs Crane & Hoist Co. offers specially designed sheet lifters for handling any length, width or stack height of sheet or plate. These units will also handle sheet aluminum, plastic, polyfoam buns, or similar materials that require load support in handling. One man operation and single plane horizontal motion of legs allows for maximum speed and efficiency in handling. Specially designed for rugged industrial use, lifters may be supplied with turntables, scales, or other accessories as required.

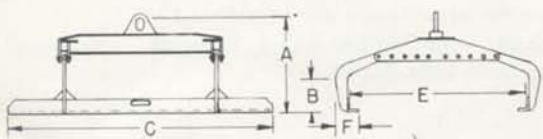
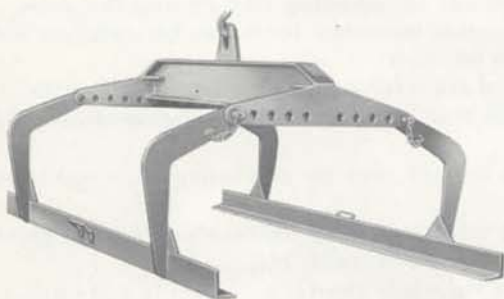
Unit shown will handle 120-inch wide by 40-foot long sheet, 5-ton capacity.

SERIES 542—ADJUSTABLE

A manually operated sheet lifter suitable for use where sheets of various widths must be handled and the quantities are not large.

The adjusting pins are locked in place, button-release-type for rapid hand adjustment without the aid of tools.

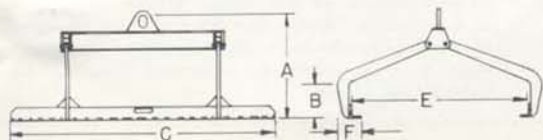
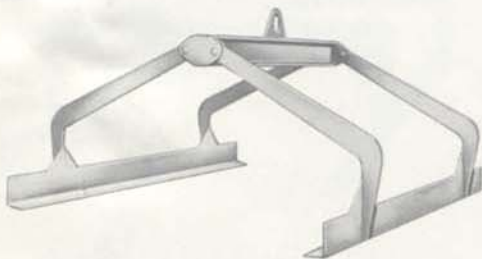
The six (6) inch increments of sheet width adjustment are adequate for most applications.



| ITEM NUMBER | CAP. TONS | SHEET WIDTH—E | | HEIGHT—A | DIM. B | DIM. C | DIM. F | WGT. LBS. |
|-------------|-----------|---------------|------|----------|--------|--------|--------|-----------|
| | | MIN. | MAX. | | | | | |
| 542-40-48 | 2 | 24" | 48" | 30" | 10" | 72" | 5 3/4" | 190 |
| 542-60-48 | 3 | 24 | 48 | 30 1/2 | 10 | 72" | 6 1/4" | 227 |
| 542-60-54 | 3 | 30 | 54 | 31 | 10 | 84 | 6 1/4" | 293 |
| 542-100-48 | 5 | 24 | 48 | 31 1/2 | 12 | 84 | 7 1/2" | 357 |
| 542-100-60 | 5 | 48 | 60 | 33 1/2 | 12 | 84 | 7 1/2" | 374 |

SERIES 543—NON-ADJUSTABLE

This manually operated non-adjustable sheet lifter is most useful where there is very little variation in material width and where quantities to be handled do not justify more expensive equipment.



| ITEM NUMBER | CAP. TONS | SHEET WIDTH—E | HEIGHT—A | | DIM. B | DIM. C | DIM. F | WGT. LBS. |
|-------------|-----------|---------------|----------|--------|--------|--------|--------|-----------|
| | | | OPEN | CLOSED | | | | |
| 543-20-24 | 1 | 24" | 23" | 26" | 10" | 60" | 5 1/4" | 104 |
| 543-20-30 | 1 | 30 | 25 | 29 | 10 | 60 | 5 1/2" | 111 |
| 543-20-36 | 1 | 36 | 28 | 33 | 10 | 60 | 5 3/4" | 118 |
| 543-20-48 | 1 | 48 | 30 | 38 | 10 | 60 | 5 3/4" | 142 |
| 543-40-24 | 2 | 24" | 24" | 26" | 10" | 72" | 6 1/2" | 136 |
| 543-40-30 | 2 | 30 | 25 | 30 | 10 | 72 | 6 1/2" | 146 |
| 543-40-36 | 2 | 36 | 27 | 33 | 10 | 72 | 6 1/2" | 149 |
| 543-40-48 | 2 | 48 | 30 | 38 | 10 | 72 | 6 1/2" | 164 |
| 543-60-24 | 3 | 24" | 25" | 28" | 10" | 84" | 6 1/2" | 220 |
| 543-60-30 | 3 | 30 | 27 | 31 | 10 | 84 | 6 1/2" | 225 |
| 543-60-36 | 3 | 36 | 31 | 34 | 10 | 84 | 6 1/2" | 229 |
| 543-60-48 | 3 | 48 | 33 | 41 | 10 | 84 | 6 1/2" | 281 |
| 543-60-60 | 3 | 60 | 36 | 48 | 10 | 84 | 7 | 328 |

We reserve the right to change design at any time when in our opinion the product may be improved thereby.

Weights given are approximate and may vary.

Capacities given have been carefully calculated and proven in use; they are submitted without assuming any responsibility beyond the original price of the merchandise.